

ISSUE 219

Pop into


NOVEMBER 2024

PANMURE

YOUR LOCAL MONTHLY BUSINESS AND COMMUNITY UPDATE

www.popintopanmure.co.nz

 PopintoPanmure

 09 527 6389



Guide to a Relaxed Christmas in Panmure!

The festive season is just around the corner! Although it's a time of excitement, let's face it—Christmas shopping can be stressful. To help, we've put together some suggestions to ease the holiday stress and make your celebrations a little simpler this year.

Try our catering pick: Kalye Manila. They offer delicious Filipino food for your holiday events, making your celebration stand out. Their services are filling up quickly, so be sure to visit their website for more details and to place an order soon!

Don't underestimate op shops. Panmure has some fantastic local stores for affordable, one-of-a-kind Christmas presents. Dove Hospice, The Red Cross Shop, and The Salvation Army Store offer a range of unique crafts, jewellery, and budget-friendly finds.

Gifts for Dad: If you're searching for the perfect gift for dad, be sure to stop by Shoe Zone or Big Broz. Both stores offer stylish clothing and footwear, with friendly service and great bargains to match!

Plus-Size Fashion Finds: Panmure is home

to Curvy Plus, a wonderful store offering beautiful clothing for plus-sized women. Browse their gorgeous dresses and brand-new wide-fit shoes at amazing prices.

With so many local businesses to explore, Panmure makes it easy to complete your Christmas list. Shop local and let Panmure help make this your best Christmas yet!

And don't forget to check out the Town Manager's update inside for more details on the range of holiday events happening around town this season.

TOWN MANAGER'S REPORT



Christmas is nearly here! To kick off the festive season, make sure to join us on Thursday 28th November, from 7:30pm-8:30pm, at the 3 Kings Road Carpark by the Stone Cottage Museum as we turn on our Christmas Tree Lights. The lighting will be accompanied by the Ikuna Youth Brass Band providing some festive tunes as well as free hot chocolates and an information booth- to provide your feedback about the town centre and what activities would be great to see in the new year!

The PBA has expanded this year's Christmas festivities with a Christmas Bash theme running from December 1st to December 14th. Key dates are an all-free event at Clifton Court and the Panmure Library on December 7th, 11am-3pm, and a Christmas Craft Market from 11am – 3pm & Upcycler's Market from 9am – 1pm on December 14th. Make to follow our social media to never miss out on our updates! FB: @PopintoPanmure, Instagram: @panmurebusinessassociation

The holiday season is a prime time for small businesses to boost sales, but standing out among the competition requires some strategy. Make the most of the festive season with some of these tips!

Create Special Promotions

Offer holiday discounts, bundle deals, or limited-time offers to entice customers. Flash sales or "12 days of Christmas" promotions can create urgency and excitement.

Leverage Social Media

Use festive-themed posts and ads on social media to reach a broader audience. Highlight your holiday products or services, and encourage customer engagement with contests or giveaways.

Offer Gift Cards

Gift cards are a convenient and popular option for last-minute shoppers. Promote them as a perfect gift for those who are hard to shop for.

Focus on Customer Experience

The holidays are all about giving. Offering personalized services, fast shipping, or free gift wrapping can make a lasting impression and encourage repeat business.

Make the most of the festive season by being creative, engaging, and offering value to your customers.

Elaine Soakai
Town Manager

SECURITY UPDATE

The PBA are happy to announce that additional security officers will be roaming the town centre over the Christmas period. Security officer Hasi will be joining our team from the end of November, with another officer providing additional support from the first week of December. Make sure you say hello when you see them around town! A kind reminder to our members that with the upcoming busy holiday season, scammers often target small businesses with fraudulent

offers or payment schemes. Be extra cautious of unsolicited emails, fake invoices, or phone calls from "suppliers" asking for urgent payments. Verify all transactions and requests, especially if they seem unusual or too good to be true. Ensure your staff is trained to spot phishing attempts or suspicious activities. Protect your business by using secure payment systems and regularly updating your cybersecurity. A little extra vigilance can help safeguard your business from scams and avoid costly mistakes this festive season.



Published by



Taniela Kaivelata
Security Liaison Officer

Supavalue's Cool Treats are Here for Summer!

SUPAVALUE SUPERMARKET

88 Queens Road

09 570 5525

7 Days 9am-8pm

 Supavalue supermarket Panmure



Supavalue is all set to keep you cool and refreshed this summer!

New for the season, Supavalue has introduced a brand-new slushie machine with two classic flavours to choose from. But that's not all—they've also launched a new range of delicious ice cream flavours. Whether you want to indulge in a single scoop or mix things up with multiple flavours, you're in for a treat!

And just a few weeks from now, Supavalue will be rolling out milkshakes, too!

Expect all your favourites like strawberry, chocolate, and raspberry, with a fun twist: they're even adding a creamy soda flavour to the mix!

Supavalue is affordable and family-friendly, making it the perfect pit stop during your Christmas shopping in town.

Samit and his team of friendly faces can't wait to greet you throughout the busy Christmas and summer holidays. Stop by for a refreshing treat or to pick up last-minute goodies for your Christmas prep.



E Tipu e Rea Whānau Services in Panmure

E TIPU E REA WHĀNAU

13-15 Queens Road

09 551 4367

 <https://etipueareaws.org.nz/>

 Etipueareaws

E Tipu e Rea Whānau is dedicated to supporting and empowering teen parents across Auckland, with a strong kaupapa Māori approach. Working alongside local iwi, the organization offers essential advocacy, health, and social services.

Their Tukutuku team provides a range of services, including midwifery care, immunisations, well-child checks, and counselling, all in a safe, non-judgmental environment. Understanding the financial challenges many young parents face, Tukutuku offers home visits and additional support for housing and health needs, helping families thrive.

E Tipu e Rea Whānau is committed to en-



sure young parents and their babies have the best start in life. Families in Tāmaki and Hauraki are encouraged to connect, share meals, and receive the support they need.

Visit their website to meet the team, explore the services they offer, and learn more about their meaningful community roots.

Important Rail Closures and Transport Changes for 2024-2025

Auckland Transport has announced important changes to Auckland's train network as part of the upgrade to provide faster and more frequent services. This work is part of the City Rail Link project, set to open in 2026.

Upcoming Closures:

- Christmas 2024: The full rail network will be closed from 27 December 2024 to 27 January 2025. Some lines will reopen on 28 January 2025, including the Western and

Onehunga lines. The Southern and Eastern lines south of Otahuhu will have bus replacements for an additional week.

- Easter 2025 and Christmas 2025 will also see extended closures.
- Some lines will experience reduced train frequencies at certain times.

Alternative Transport:

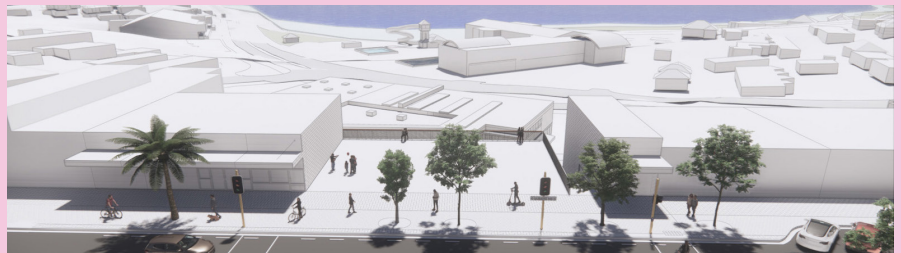
- During closures, express bus services will replace trains.

- Bus routes will be enhanced to support passengers.
- For details on how to plan your trip, use AT's Journey Planner or the AT Mobile app.
- Customers can also visit the train line status page on the AT website for the latest updates.

Please make sure to check the closures and plan your trips ahead of time.



Consultations Now Open – Your Feedback Matters!



Panmure Sign Project

Auckland Council is seeking feedback on the Panmure sign project. Many locals will remember the 15-meter-tall Panmure sign that stood at the old Panmure roundabout, installed in 1994. In 2019, the sign was removed to make way for the Eastern Busway. After the removal, Auckland Council transferred ownership and \$250,000 in funding to the Maungakiekie-Tamaki Local Board.

Now, the local board is asking for your feedback on how the funds should be spent. A few options for the future of the

Panmure sign have been presented, and the community has shown strong interest in it. If you'd like to have your say, be sure to visit Auckland Council's 'Have Your Say' website and submit your feedback.

Basin View Square Consultation

Eke Panuku is also looking for feedback on a new town square project on Queen's Road. The current area is a temporary square, and your input will help shape the final design. Visit the feedback portal on the Eke Panuku website to share your thoughts on where this project should go.