

ISSUE 214

Pop into

JUNE 2024

PANMURE

YOUR LOCAL MONTHLY BUSINESS AND COMMUNITY UPDATE

www.popintopanmure.co.nz  PopintoPanmure  09 527 6389



EXPLORE THE TASTES OF OUR TOWN!

Tastes of Panmure Returns!

As many already know, Panmure is home to wonderful eateries that we enjoy all the time. Our food places have been featured on popular YouTube channels, Instagram pages, and publications like *Lazy Susan* and *Taste and Travel International*.

To celebrate our eateries for Food Month, we have brought back "Tastes of Panmure" with two exciting competitions. Explore the fantastic eating options in town, and you might just win big while doing so!

Twenty-seven eateries in town are participating in a Collect 4 Competition. Ask for a 'Tastes of Panmure' card the next time you eat out and collect four stamps from any participating eatery. Once you've collected four stamps, you could win \$250 worth of vouchers to spend in town! We've already seen many completed cards in our entry box, so make sure to join before the competition ends on June 30th.

For those who prefer to savour our town's food in a more relaxed manner, we have the Foodie Photo Competition.

Simply take a photo of your meal the next time you dine in Panmure and post it to Facebook or Instagram with the hashtag #panmuretastes. Tell us about what you ordered in the caption. We're handing out vouchers every week in June, so feel free to enter as many times as you like!

Both competitions have seen enthusiastic entries, with many people enjoying the opportunity to try new places around town. We're excited to see many more before the month ends!

TOWN MANAGER'S REPORT

The 2024 Tastes of Panmure Food Month is well underway and the response has been very positive! We're excited to deliver more ways for visitors to engage with our town centre by building upon the success of last year's Bingo-Style format. This year, the team have worked hard to lower the barrier to participation and encourage more people to take part- with both physical and digital elements. Be sure to keep an eye out for the Thursday Specials; a newly introduced spotlight feature.

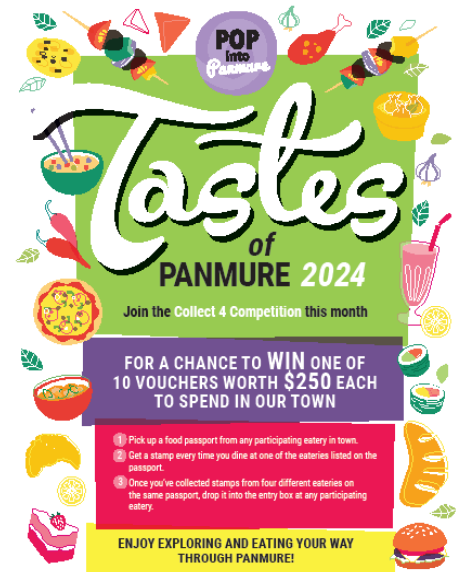
The PBA wants to hear from you! We are currently seeking feedback from our members, collaborating partners and visitors to Panmure. This is to enable us to deliver better value for businesses, residents and visitors to our town centre. A survey link can be found on our website homepage (popintopanmure.co.nz) and copies of the survey are also available from our office, located at 16 Clifton Court. Members can request a paper copy by calling our office on 09 527 6389.

Be sure to join us at the next session of our monthly Power Hour & Coffee with a Cop

session, should you be unable to join us on Wednesday 12th June, 11:30am-12:30pm at The Café...with no name. The July session will be held at Foodies & Me (121 Queens Road), 11:30am-12:30pm July 10th.

As we truly enter winter, we are expecting more wet weather. For the town centre, we know that blocked drains are big concern as they can cause flooding. We ask every to please report any debris build up in these drains to Auckland Council using their online reporting tool (and make note of the reference number)- before alerting our office. Let's be proactive together to keep our town centre looking tidy!

Elaine Seakai
Town Manager



POP into Panmure

Tastes of PANMURE 2024

Join the Collect 4 Competition this month

FOR A CHANCE TO WIN ONE OF 10 VOUCHERS WORTH \$250 EACH TO SPEND IN OUR TOWN

- 1 Pick up a food passport from any participating eatery in town.
- 2 Get a stamp every time you dine at one of the eateries listed on the passport.
- 3 Once you've collected stamps from four different eateries on the same passport, drop it into the entry box at any participating eatery.

ENJOY EXPLORING AND EATING YOUR WAY THROUGH PANMURE!

[@panmurebusinessassociation](#) [popintopanmure](#) 

SECURITY UPDATE



Published by



We have a newly built pedestrian crossing in Panmure! Safely connecting the Panmure Community Library and Clifton Court, the Pilkington Road crossing is a win for making our town safer for everyone- but particularly for our school kids, those less mobile and wheelchair users.

Unfortunately, our office has also received reports of less great transport-related that incidents that we would like to bring to the attention of our members and the public. We would like to kindly remind everyone travelling down Basin View Lane and turning onto Lagoon Drive, to steer clear of the bus lanes and make sure they are turning into the correct lane. Avoid the hefty fines, or causing an accident by practicing patience and staying vigilant on the roads.

The PBA is aware that recently, turning right into the town centre from Lagoon

Drive into Queens Road has an unusually long wait time at the intersection lights. It is unclear how frequent or prevalent this issue is, so we would welcome feedback on this. Please let our office know or send an email to info@panmure.net.nz as we are committed to minimising any confusion or disruption associated with accessing our town centre.

Taniela Kaivelata
Security Liaison Officer

Chang Thai Café's Fresh Journey Under Julie Pham



It's been ten months since Chang Thai Café welcomed new ownership. We caught up with Julie Pham, the new owner, to share her journey. With extensive experience cooking at eateries across Auckland, including spots like Vietnamese Delight and the popular Lodge Café in Mount Albert, Julie brings a wealth of experience to the business.

As a dedicated single mother of three, Julie confesses that running the café is a labour of love. Despite the challenges, she pours her heart into ensuring every guest enjoys a delightful culinary experience. Julie cherishes customer feedback and strives to maintain impeccable standards for her

customers.

If you're in the mood for Vietnamese and Thai street food this winter, swing by Chang Thai Café. Julie's dishes are consistently crafted with care, and she goes above and beyond to create a warm, welcoming atmosphere where every visitor leaves happy!

CHANG THAI CAFE

146 Queens Road

09 600 2082

Mon-Thur 12pm - 9pm,

Fri-Sun 3pm - 9pm

Urban Cuts: Icon Revamped

URBAN CUTS

69 Queen's Road

021 175 4952

Mon-Sat 9am-6pm,

Sun 10m-4pm

If you're a regular at the barber shops in Panmure, get ready for some exciting news: Dai To'ofolne, the original owner of Urban Cuts, is back! And he's returned with some incredible upgrades that amplify the shop's nostalgic 90's vibe.

From the moment you step inside, you're greeted with a laid-back, casual atmosphere. Old school hip-hop and RnB tunes fill the air, while music videos play on a big screen. The walls are adorned with signed jerseys from New Zealand Rugby

players, making the place feel like a time capsule straight out of the 90s.

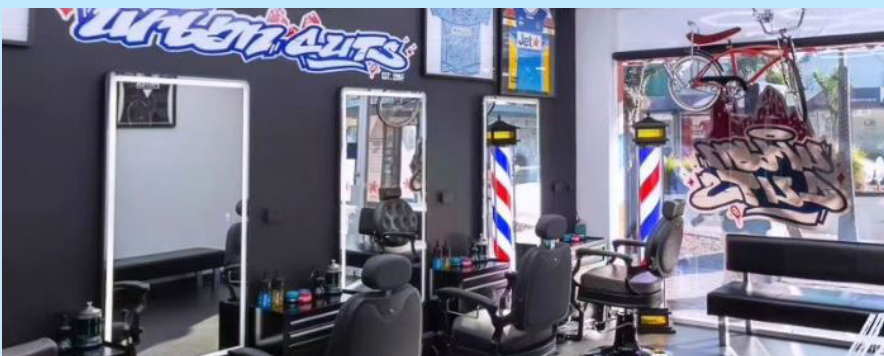
Dai is thrilled to be back, and he's not the only one—his loyal customers have been buzzing with excitement and showering praise on the revamped shop. Drawing inspiration from classic American barber shops, Dai has transformed Urban Cuts with a retro aesthetic that will impress.

Dai's friendly and relaxed presence adds to the welcoming vibe of Urban Cuts. The shop is now a top spot for anyone looking to chill out in style. With comfortable stations, LED-lit scissors, and hexagonal lights on the ceiling, the ambiance is sleek and cool, perfectly complemented by your favorite throwback tracks.



The barber shop isn't just about haircuts; it's a cultural hub. You'll find memorabilia like a vintage bike that's been to the New Zealand Music Awards, and an arcade with over 1500 games for some added fun. Dai, a local born and raised, feels like he's come home. He loves reconnecting with his community and says the best part of the job is the people. The upgrades were his 40th birthday gift to himself, and he's eager to share them with everyone.

So, for your next barber trip, step back in time and visit Urban Cuts!



STUDIO 
GALLERY

TEST POT

4 JUL - 30 AUG
2024

Open Tuesday-Saturday
Hours: 10am-2pm

This is the latest work by artist and designer Clayton Elliott. This work uses recycled materials to make colourful abstract works on canvas and paper.

Admission free

Share  Promote  Connect

Studio Gallery
8 Clifton Court, Panmure,
Auckland, 1072

www.studiogallery.co.nz